

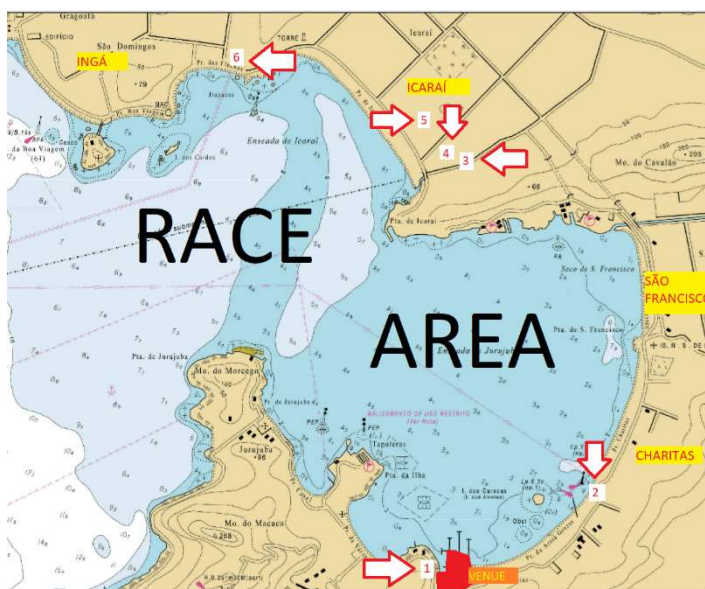
ACCOMMODATION INFORMATION

The Club has suites equipped with air-conditioning, refrigerator, hot water, cable tv and Wifi for up to 4 people and collective accommodation where up to 14 people can sleep in bunk beds. Bookings and information about accommodation at the club, can be obtained, by email: womenshemisphere@velaregata.com or by WhatsApp: +55(21)99972-7946

Free Motor home parking is also possible. Please Contact: nautica@cncharitas.org.br

LIST OF HOTELS IN ORDER OF DISTANCE FROM THE VENUE

- 1) **Pousada Porto Charitas** (600m – 7 minutes walking)
 - https://www.instagram.com/porto_charitas?igsh=ZGY0eXM4YzJiNW5p
 - <https://portocharitas.com.br/>
 - ✉ contato@portocharitas.com.br
 - ☎ +55 (21) 98135-9576
- 2) **Hotel Solar do Amanhecer** (1,1km – 13 minutes walking)
 - <https://solardoamanhecer.com.br/>
 - ✉ reservas@solardoamanhecer.com.br
 - ☎ +55 (021)2610-5221
- 3) **Matiz Niterói Design Hotel** (4,8km – 12minutes by Uber (+/- R\$ 15,00))
 - <https://www.hotelariabrasil.com.br/hotel/matiz-niteroi-design-hotel>
 - ✉ reservas@matizniteroi.com.br
 - ☎ +55 (021)97150-1793
- 4) **Tower Icaraí Hotel** (4,9km – 12minutes by Uber (+/- R\$ 15,00))
 - <https://www.towerhotel.com.br/>
 - ✉ tower@towerhotel.com.br
 - ☎ +55 (021)2612-2121 / 2610-7879 / 2610-2872
- 5) **Icaraí Praia Hotel** (5,2km – 16 minutes by Uber (+/- R\$ 16,00))
 - <https://icaraipraiahotel.com.br/>
 - ✉ reservas@icaraipraiahotel.com.br
 - ☎ +55 (021)2612-5030 / 2714-1414
- 6) **H Niterói Hotel** (7,1 km – 20 minutes by Uber (+/- R\$ 25,00))
 - <http://hniteroi.com.br/>
 - ☎ +55 (021)3174-5055 / 99420-7365



This map shows the approximate location of the indicated hotels and inns.

If you prefer to book a house or an apartment using Booking.com, or AirBnB, prefer in the neighborhoods marked on yellow at the map